

Cleanfix REVERSIBLE FANS: DIMENSION SHEET

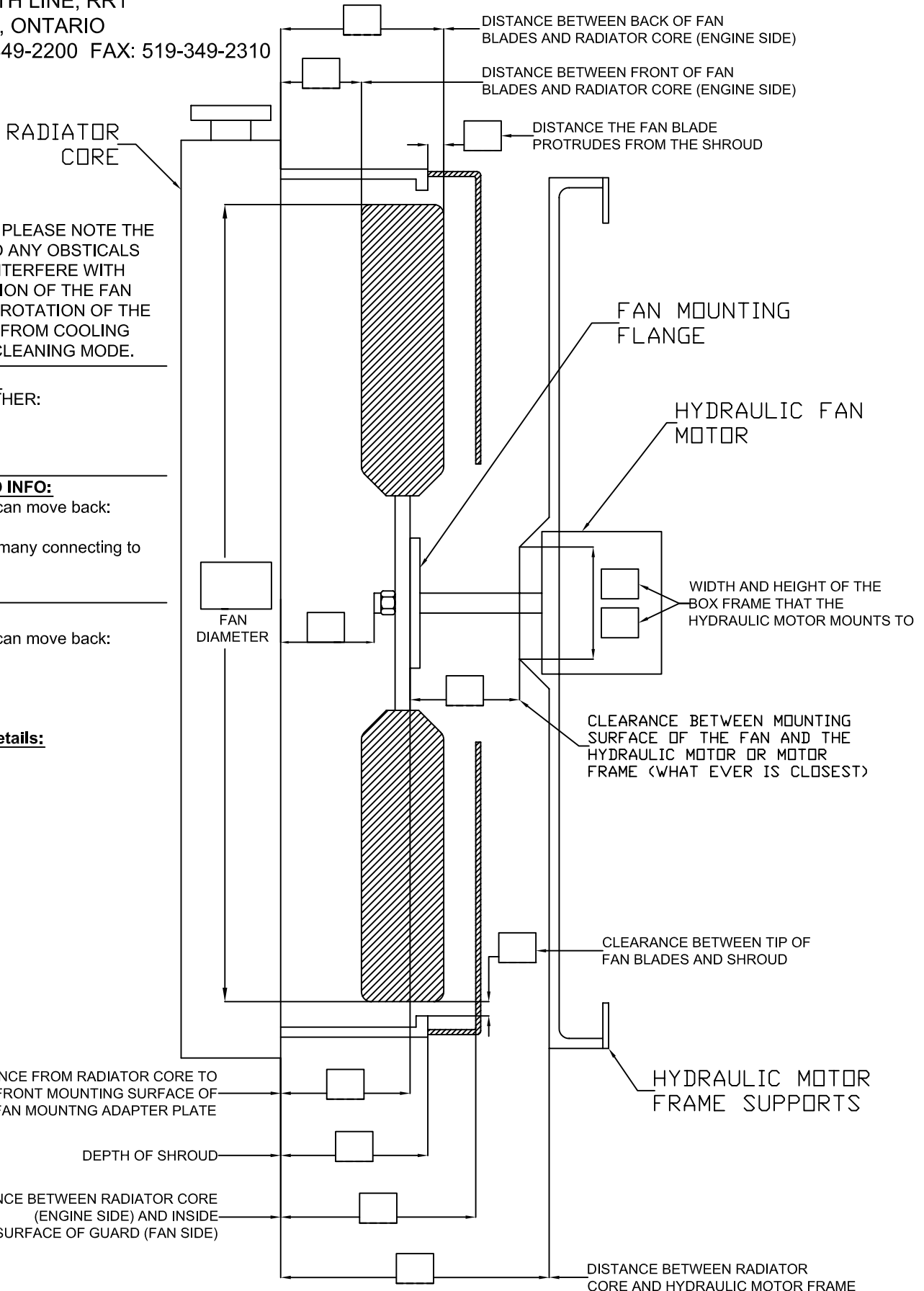
COMPLETE DIMENSIONS AND RETURN TO:



196679 19TH LINE, RR1
 LAKESIDE, ONTARIO
 TEL: 519-349-2200 FAX: 519-349-2310

PLACE THE MEASURED DIMENSIONS IN THE BOXES PROVIDED AS SHOWN AND INDICATE THE UNITS THAT THE DIMENSIONS ARE TAKEN WITH (INCHES OR MM)

EXAMPLE: OR



IMPORTANT: PLEASE NOTE THE DISTANCE TO ANY OBSTICALS THAT WILL INTERFERE WITH THE OPERATION OF THE FAN DURING THE ROTATION OF THE FAN BLADES FROM COOLING MODE INTO CLEANING MODE.

SHROUD INFO:
 RING, BOX , OTHER:

RING LENGTH:

FINGERSHIELD INFO:
 Distance guard can move back:

Bolt size & how many connecting to shroud:

Motor Details:
 Distance motor can move back:

Bolt pattern:

Motor Frame Details:

DISTANCE FROM RADIATOR CORE TO FRONT MOUNTING SURFACE OF THE FAN MOUNTING ADAPTER PLATE

DEPTH OF SHROUD

DISTANCE BETWEEN RADIATOR CORE (ENGINE SIDE) AND INSIDE SURFACE OF GUARD (FAN SIDE)

DISTANCE BETWEEN BACK OF FAN BLADES AND RADIATOR CORE (ENGINE SIDE)

DISTANCE BETWEEN FRONT OF FAN BLADES AND RADIATOR CORE (ENGINE SIDE)

DISTANCE THE FAN BLADE PROTRUDES FROM THE SHROUD

FAN MOUNTING FLANGE

HYDRAULIC FAN MOTOR

WIDTH AND HEIGHT OF THE BOX FRAME THAT THE HYDRAULIC MOTOR MOUNTS TO

CLEARANCE BETWEEN MOUNTING SURFACE OF THE FAN AND THE HYDRAULIC MOTOR OR MOTOR FRAME (WHAT EVER IS CLOSEST)

CLEARANCE BETWEEN TIP OF FAN BLADES AND SHROUD

HYDRAULIC MOTOR FRAME SUPPORTS

DISTANCE BETWEEN RADIATOR CORE AND HYDRAULIC MOTOR FRAME

Cleanfix REVERSIBLE FANS: OFF-HIGHWAY TRUCK DIMENSION SHEET

COMPLETE DIMENSIONS AND RETURN TO:



196679 19TH LINE, RR1
LAKESIDE, ONTARIO
TEL: 519-349-2200 FAX: 519-349-2310

PLACE THE MEASURED DIMENSIONS IN THE BOXES PROVIDED AS SHOWN AND INDICATE THE UNITS THAT THE DIMENSIONS ARE TAKEN WITH (INCHES OR MM)

EXAMPLE: OR

SHROUD INFO:

RING, BOX, OTHER:

RING LENGTH:

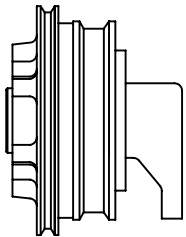
FINGERGUARD INFO:

Distance guard can move back:

Bolt size & how many connecting to shroud:

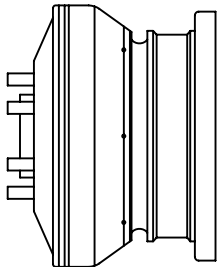
Closest Objects:

**OPTION 2:
KYSOR DIRECT DRIVE**

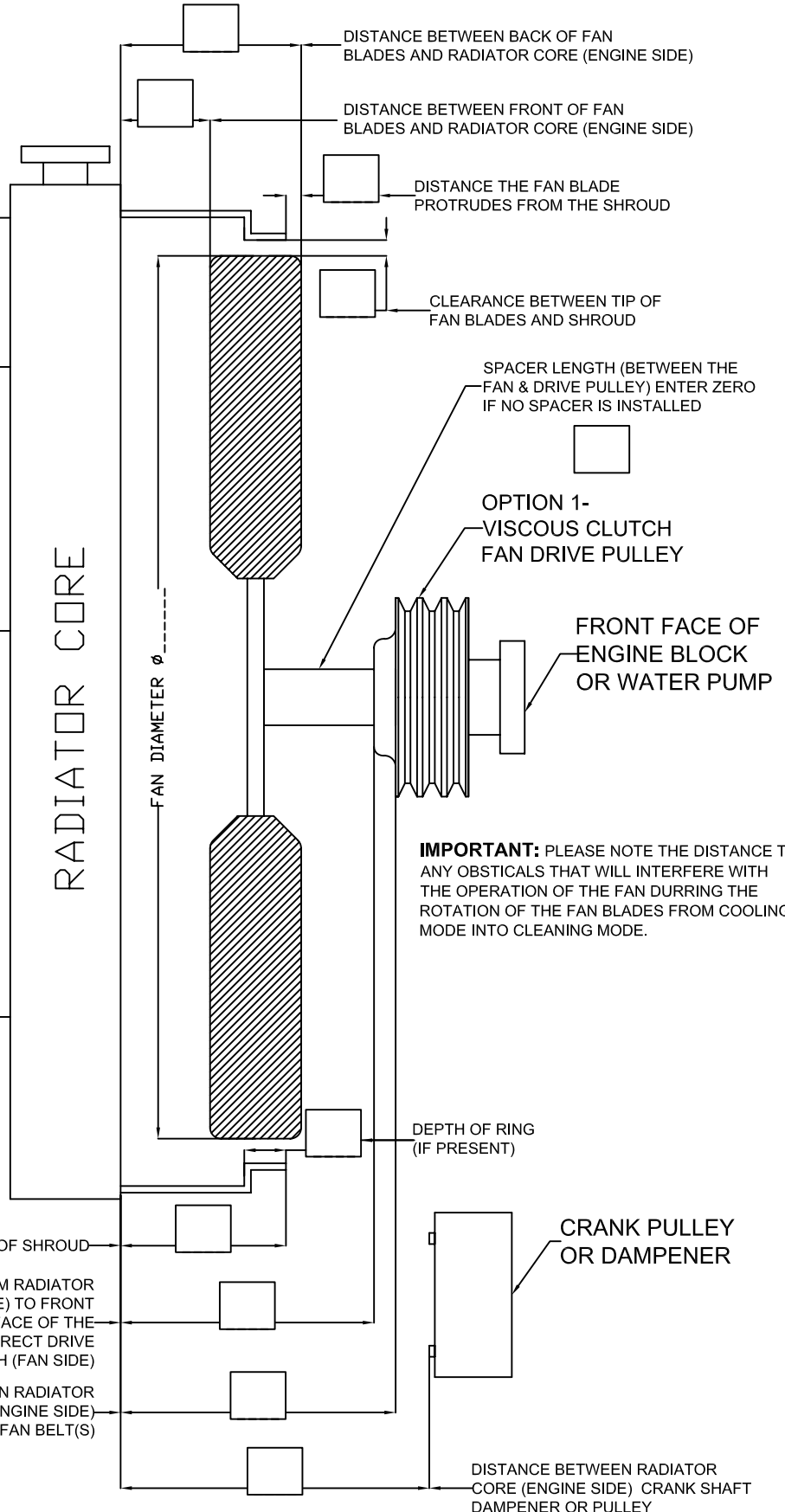


KYSOR PART #: _____

**OPTION 3-
HORTON CLUTCH**



HORTON PART #: _____
STUDS: YES / NO
STUD LENGTH: _____



IMPORTANT: PLEASE NOTE THE DISTANCE TO ANY OBSTICALS THAT WILL INTERFERE WITH THE OPERATION OF THE FAN DURING THE ROTATION OF THE FAN BLADES FROM COOLING MODE INTO CLEANING MODE.

Cleanfix REVERSIBLE FANS: DIMENSION SHEET

PLACE THE MEASURED DIMENSIONS IN THE BOXES PROVIDED AS SHOWN AND INDICATE THE UNITS THAT THE DIMENSIONS ARE TAKEN WITH (INCHES OR MM)

COMPLETE DIMENSIONS AND RETURN TO:



196679 19TH LINE, RR1
LAKESIDE, ONTARIO
TEL: 519-349-2200 FAX: 519-349-2310

EXAMPLE: OR

RADIATOR CORE

! CAUTION !

REFERENCE ALL DIMENSIONS FROM THE SAME RADIATOR CORE &

IF MEASURING A MACHINE WITH A SPLIT RADIATOR ENSURE ALL MEASUREMENTS ARE TAKEN FROM THE CORE THAT IS CLOSEST TO THE FAN BLADES

SHROUD INFO:

RING, BOX, OTHER:

RING LENGTH:

FINGERGUARD INFO:

Distance guard can move back:

Bolt size & how many connecting to shroud:

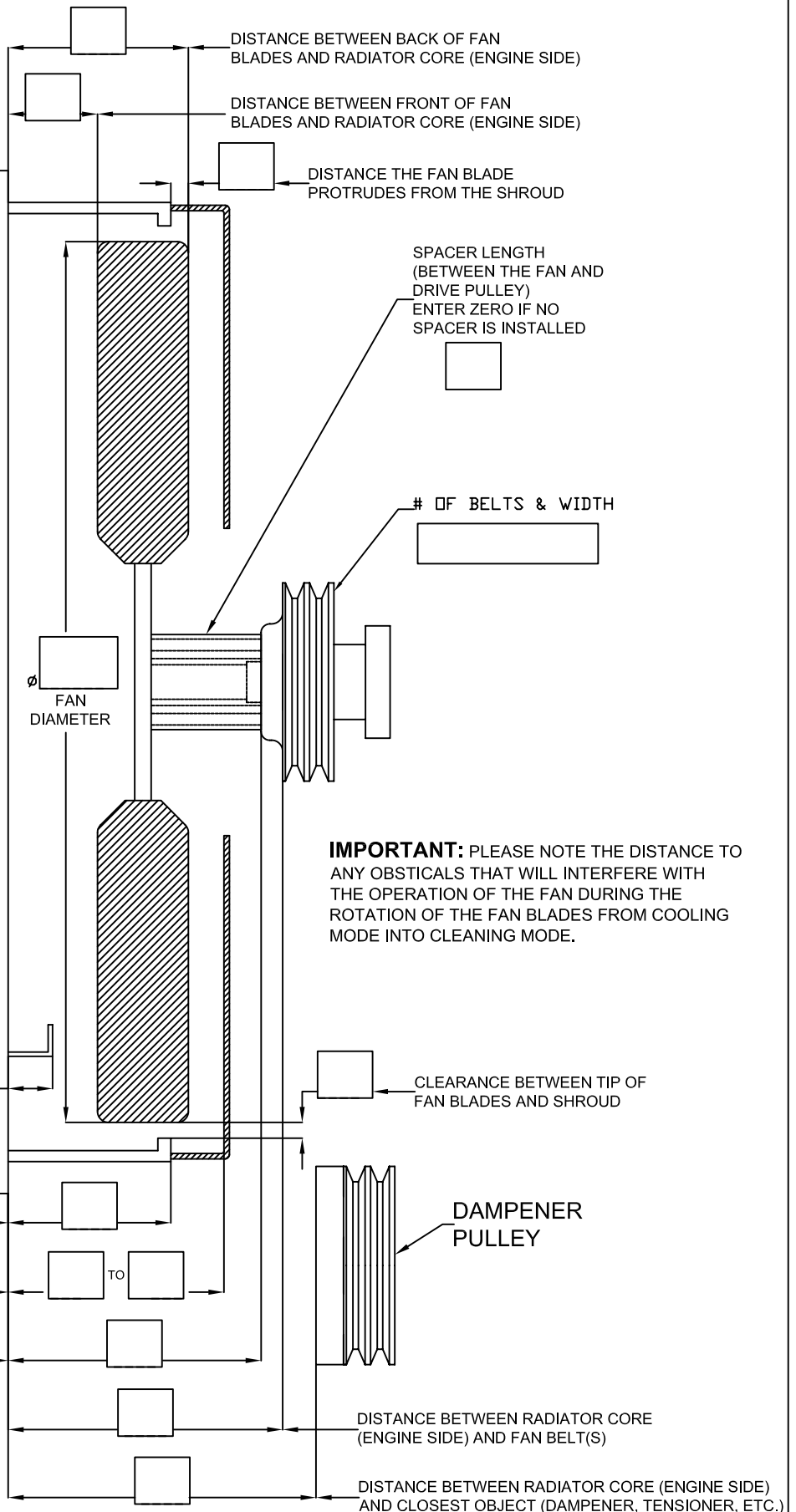
Closest Objects: (object - dimension)

SIDE-BY-SIDE RAD. FRAME (YES / NO) Dimension Off Rad

DEPTH OF SHROUD

DISTANCE BETWEEN RADIATOR CORE (ENGINE SIDE) TO INSIDE SURFACE OF GUARD (FAN SIDE) & TO BACK SURFACE OF GUARD (ENGINE SIDE)

DISTANCE FROM RADIATOR CORE (ENGINE SIDE) TO FRONT MOUNTING SURFACE OF THE FAN DRIVE PULLEY (FAN SIDE)



IMPORTANT: PLEASE NOTE THE DISTANCE TO ANY OBSTICALS THAT WILL INTERFERE WITH THE OPERATION OF THE FAN DURING THE ROTATION OF THE FAN BLADES FROM COOLING MODE INTO CLEANING MODE.

CLEARANCE BETWEEN TIP OF FAN BLADES AND SHROUD

DAMPENER PULLEY

DISTANCE BETWEEN RADIATOR CORE (ENGINE SIDE) AND FAN BELT(S)

DISTANCE BETWEEN RADIATOR CORE (ENGINE SIDE) AND CLOSEST OBJECT (DAMPENER, TENSIONER, ETC.)